

# Complete Mobile Solutions for Surveying and Mapping

Optech



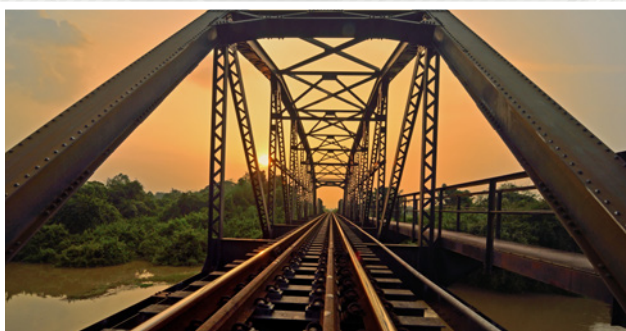
## **Asset Inventory**

Quickly survey urban and industrial areas to deliver the highest quality building information and 3D models



## **Transportation & Utilities**

Precisely model existing infrastructure with engineering-grade accuracy, or monitor road surface conditions and catalogue signs, light-poles, and ditches



## **Rail**

Lynx is routinely mounted on rail cars to monitor track conditions, detect obstructions and measure clearances

Throughout the world, Optech Lynx mobile solutions lead the industry in surveying transportation and utility corridors. With the ability to collect up to 1.2 million points per second and 360° lidar technology, plus a variety of integrated camera options, users can efficiently map road surfaces, measure bridges and overhead wire clearances, catalogue signs and other assets, monitor ditches, and look for vegetation encroachment, all at speeds of up to 100 km/hr for minimal traffic disruption.

Whether you need the cost-effective results of the Lynx MG1 (Mapping Grade) system or the unmatched position accuracy of the Lynx SG1 (Survey Grade) system, the options are there to meet your needs—along with complete digital software workflow, and worldwide 24/7 customer support.

# Complete Mobile Solutions for Surveying and Mapping

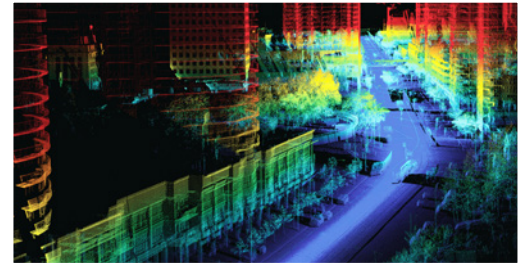


The ideal solution for mobile surveying uses a combination of high-speed programmable laser scanning and camera technologies precisely configured for simultaneous collection.



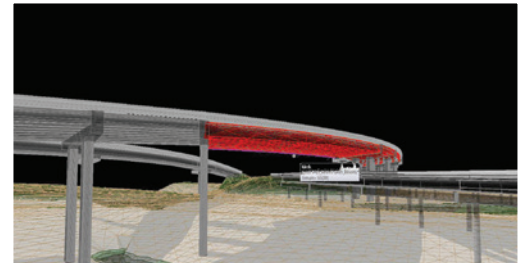
The latest release of the Lynx family of mobile sensors provides the ideal solution for corridor surveys. With automated software to easily handle the higher density of points, and 360° coverage with an optimized point distribution that minimizes shadowing, there is no need to slow down from highway speeds to collect engineering-grade data.

Adding to the richness of the data are up to four individual cameras and the Point Grey Ladybug® 360° camera as standard options. Imagery captured by cameras can be draped onto the Lynx lidar point cloud, dramatically enhancing data value and information extraction capabilities. Using the game-changing Optech LMS software, data can automatically undergo coordinate and datum transformations to maintain spatial integrity.



Asset Inventory

The Lynx SG1 offers completely automated boresighting, while both the Lynx SG1 and MG1 offer the fastest scanning speeds on the market with time-stamped and calibrated digital cameras that are fully integrated with the lidar data.



Road Infrastructure & Clearances

- Flexible and modular product offerings designed and priced to guarantee you only pay for what you need
- Highest scanner speed and point density in the industry—ideal for mapping at high speeds with Class 1 safety
- Efficient scanning with real-time visualization, diagnostics, image preview and digital base maps with tracks
- Superior navigation with POSPac™ resulting in tightly coupled GPS/INS processing, SmartBase™ and GLONASS support
- Completely automated data processing with up to 5-mm precision, independent of the software operator
- Integration and operation of up to 4 x 5-MP cameras and a 360° Point Grey Ladybug® camera simultaneously



Fast, Easy, Detailed Data Collection

Point Grey Ladybug® 360° camera



5-Megapixel cameras