

Airborne Solutions for Corridor Surveys

Optech



Transportation

Efficiently manage projects with 3D engineering-grade infrastructure and terrain data



Utilities

Use the precision and target discrimination of Optech sensors to measure sag and encroachment with fewer flight passes



Pipelines

Monitor the condition of remote pipeline assets from the air with engineering-grade accuracy

Transmission networks, roads, railways and pipelines are the arteries of industry, and obtaining 3D data of related infrastructure from the air is the most efficient approach. Optech provides airborne lidar and camera sensors to manage these vital assets. Even in the most remote and inaccessible areas, Optech sensors such as the Orion C300 ALTM can survey the entire length of the corridor quickly, efficiently, and without disrupting activities on the ground.

After the survey, Optech's engineering-grade lidar data, excellent target discrimination, and RGB/thermal imagery provide solutions for vegetation encroachment, measuring overhead wire clearances, and monitoring the condition of critical assets.

Airborne Solutions for Corridor Surveys

Optech

Have a specific corridor application requirement? Optech professionals will work with you to seamlessly package a corridor imaging solution to maximize your project success.

Optech airborne lidar and imaging solutions are purpose-designed for tight-tolerance applications demanding high precision and accuracy. Available as independent sensors or as complete corridor mapping solutions, Optech airborne sensors can be seamlessly configured, controlled, and monitored from a single flight management system capable of supporting up to eight sensors simultaneously.

- Industry-leading lidar range precision for engineering-grade data outputs and the highest quality data products possible
- Exceptional small-target detectability ensures wholly complete data sets, irrespective of wire coating and size
- Fully-integrated sensors and workflows provide ease of operation and efficient data throughput
- Compact sensor sizes and low power requirements enable ease of installation in fixed-wing, rotorcraft and UAV platforms
- Uniquely scalable off-the-shelf sensor mounts enable custom sensor suites for your specific application needs
- In-air XYZ point cloud display and LAS file generation dramatically improves collection confidence and sensor productivity, and provides instant deliverables for recon and rapid response applications
- Automated, production-focused workflows include rigorous auto-calibration routines for consistent data quality and accuracy over the entire project space



Orion C ALTM seamlessly integrated with a CS-10000 camera using an Optech sled mount



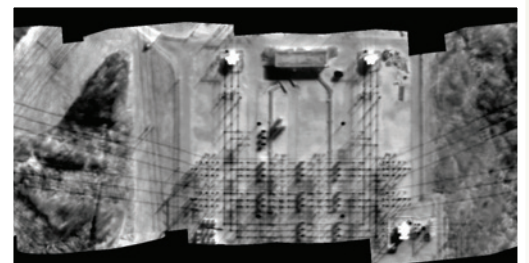
Airborne Survey Solutions



Oblique RGB and IR Solutions



High-Resolution Digital Images



Integrated Thermal Sensors

www.optech.com